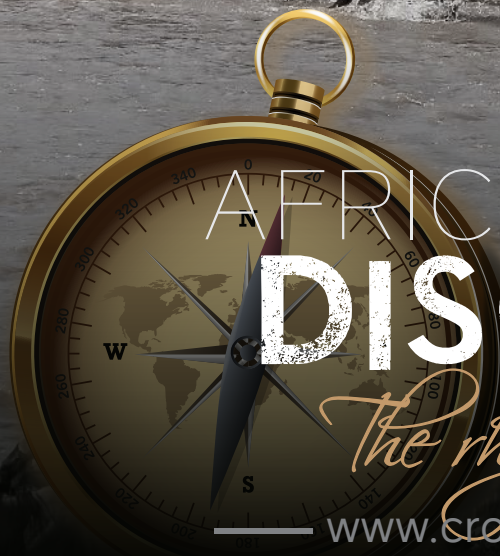


CROSS TO AFRICA

*Safaris*



AFRICAN SAFARIS

DISCOVER

*The rhythm of Africa*

www.crosstoafिकासafaris.com





# DISCOVER

## Africa with us



## Welcome to Cross to Africa Safaris

Cross to Africa Safaris was founded on a desire for the people, culture, wildlife and remarkable landscapes of East Africa. For over a period of time Cross to Africa Safaris prides itself on being among the top locally owned Tanzanian Safari Operators. We have been tailor-making experiences for our guests from all over the world and have established ourselves as the expert on East African safari.

We say this as a result of our reviews and client's testimonials from Tanzania Safari Tours we have provided to clients. Come join us to experience the rhythm of Africa.

We offer Safari tours within East Africa and we are here to make your African Safari dream come true. Imagine the incredible wildlife documentaries from the BBC and National Geographic Channel coming to life and you are a part of it! Nothing beats seeing animals in their natural habitat and witnessing the circle of life."



[www.crosstoasafaris.com](http://www.crosstoasafaris.com)

*"In an increasingly competitive industry, we understand that by offering superior customer service and professionalism we can provide unrivalled levels of experience"*

A stylized signature in blue ink.

**Anthony. P. Milinga**  
Founder - Cross to Africa Safaris



# WHY Choose Us?

## Why travel with Cross to Africa Safaris?

We are a well established company founded in 2014 by Arusha local Anthony Protas Milinga. From a young age Anthony dreamed of becoming safari guide and the first step was earning a Diploma in Wildlife Management. He spent five years climbing Mt Kilimanjaro before gaining an apprenticeship as a safari guide.

Since then Anthony has proven himself to be a professional and well-liked safari guide for over 15 years. Now as the owner and director of Cross to Africa Safaris, our guests have consistently voted it as one of the top safari operators in Tanzania.



### 24/7 ON-SAFARI SUPPORT

Always there for you, from before you travel until after you return home.



### TALK TO US

Don't let language stop you!  
let's discuss your dream holiday



### OUR BEST PRICE PROMISE

You will always get the best value with us,  
in one complete tailor-made itinerary.



### TAILOR MADE SAFARI

We organise tour from  
mid- range to luxury trip to East Africa.



### OUR GUIDES

Safari guides are crucial part of a successful safari. Hence, we invest in regular training to keep our guides abreast of customer service standards and to ensure that the highest standards are achieved.



ABU SHABAN



AHADI M. MSUYA



GODFREY S. MSHUZA



DENIS M. AKARO

All our guides are fluent and articulate in conversational English and some can converse in other foreign languages including, Spanish, French, German, Portuguese and Italian.

With their help, our clients will learn about African wildlife and culture as well as acquiring first-hand experience of African hospitality.



# Our VEHICLES



**Cross to Africa Safaris** uses a fleet of customised safari vehicles. These are four and seven-seater Land Cruisers with pop-up roof and sliding windows that is ideal for game viewing, sightseeing and taking professional photographs. This are all crucial for a memorable safari tour experience.

Each unit is equipped with HF long range radio for easy communication. The vehicles are washed and sanitized before departure and are regularly maintained by a professional mechanic to ensure safety and security.

All passengers allotted a window seat and have enough space to move around comfortably- crucial when spending up 10-hours a day of game viewing from the vehicle.

## FIRST AID KIT

Every safari vehicle is equipped with first aid kit. Our guides are trained to use this in case of emergencies.

## POWER INVERTERS

All our vehicles have 110v and 220v power adapters to make it possible to charge camera and phone batteries.

## EXTENDED AND WIDE

We extended and widened the body of the vehicle to allow more space to move around and to get the best photographic angles without 'bumping' into each other. Although our vehicles are designed to carry more passengers, we only have maximum four guests per vehicle.

## WILDLIFE BOOKS AND MAPS

You will find a set of books and guides about mammals and birds. There are also maps of the area.



## POP-UP ROOF

The roof can be removed so that you can stand-up and have a better vantage for viewing wildlife.

## FRIDGE OR COOLER BOX

All our vehicles have a small fridge to keep beverages cold. This is not to be taken for granted especially after a long day out in the savannah.

## COFFEE BOX

We have a coffee box with snacks, coffee and tea that can be enjoyed at any time on a game drive.

## LARGER WINDOWS

We made all the windows in the vehicles have been made as large as possible so guest can have a better viewing experience.

## SPARE TYRES AND HEAVY-DUTY JACK

We carry two spare tires and a heavy-duty jack. Having two spares is better than having one due to poor roads in some areas and the presence of acacia thorns on others.





# ACCOMMODATION

## A GUIDE TO SAFARI ACCOMODATION

The essence of these experiences is always the spectacular natural landscape and wildlife, but your safari can be incredibly stylish too, as all of these regions have ultimate, luxurious, stylish accommodation options that can feel almost as attractive as the wildlife itself.

There are a range of accommodation choices on safari and the terminology for where to stay can be confusing. Here is our quick guide to safari accommodation.

### SEMI-PERMANENT TENTED CAMPS

An alternative form of mobile camping is increasingly available, there are a lot of camp owners recognise the value of setting up a camp close to the migrating herds.



### TENTED LODGE / CAMP

A tented lodge or camp is a permanent structure, which never moves, in which accommodation is under canvas. Most have solid, wooden floors, proper bathrooms, running water and will include a fully solid structure bar and restaurant area.





## LODGE

The definition of a lodge is less clear. This is a term used for a smaller, often owner-run accommodation, as distinct from a large hotel. They are usually truly luxurious and beautifully appointed, usually have swimming pools and almost all have their own resident vehicles, trackers and guides. A lodge is a typical place to stay on safari.



## HOTEL

The safari hotels tend to be much larger, and less personal and intimate versions of lodges. As a matter, of course, they tend not to have their own safari vehicles or guides, and so we would arrange a private safari for guests and use the hotel simply for board and lodging.



## HOUSE

There are a few options to enjoy your own house in Africa, either on safari or at the beach.

The idea being that a group of friends or family takes over the many rooms of the house to have a self-contained holiday.



## VILLA

There are a few options to enjoy your own house in Africa, either on safari or at the beach.

The idea being that a group of friends or family takes over the many rooms of the house to have a self-contained holiday.





# SAFARI Packages

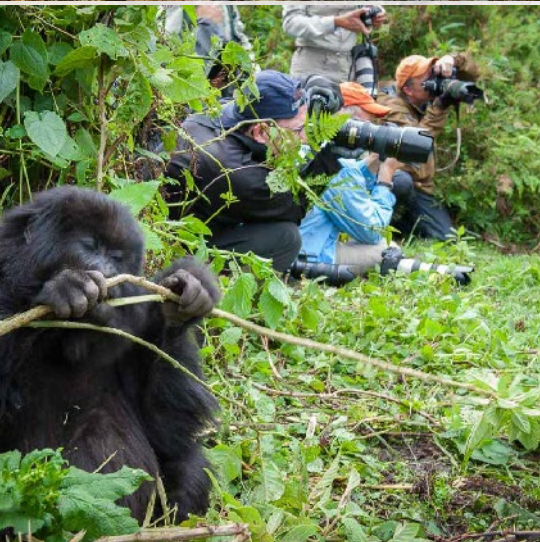
## CHOOSE YOUR SAFARI EXPERIENCE

The African continent is magical. It possesses rich wildlife, stunning landscapes, a thriving flora and fauna, breathtaking beaches, and an inexhaustible culture and history. [Cross to Africa safaris](#) can help you make your dream tour come true by choosing among our experience list. Just select the best experience that fits your needs and will do the rest.



### We have a range of activities that can enjoy on your adventure

- Serengeti Safari,
- Tracking the Great Wildebeest Migration
- Mount Kilimanjaro trekking
- Zanzibar Beach holiday
- Kenya Safari
- Usambara Hiking
- Uganda Safari
- Tanzania Safari
- Big 5 Safari
- Fly-in and fly- out Safari
- Walking Safari
- Chimps and Gorilla Tours
- Balloon Safari
- Photographic Safari
- Family holiday
- Solo Travel
- Waterfalls
- Luxury and Relaxation
- Wedding and Honey moon Safari







# BEST OF TANZANIA WILDEBEEST MIGRATION CALVING SEASON FLY IN SAFARI

**BEST MONTH TO TRAVEL:**  
DECEMBER, JANUARY, FEBRUAR, & MARCH EVERY YEAR



## Itinerary Overview

**11 DAYS.** The magic of Tanzania wildebeest migration calving season, this is a tour to the best of southern Serengeti National park, Ngorongoro crater and Lake Manyara National Park where you will experience the large number of wildebeest migration when giving birth. This is the best time of the year to see all the big cats making a kill. The southern Serengeti area is the best location for the month of December, January, February to the end of March every year.

### TRANSPORTATION:

Safari Land Cruiser with pop up roof & Wi-Fi on board.

## LUXURY ACCOMMODATION

Day	Destination	Accommodation	Activities
1	Arrival- Arusha	Arusha Gran Melia hotel	Airport Transfer/ Hotel
2	Flying/ Arusha/ Ndutu	Lemala Ndutu Tented Camp	Full day game drive
3	Southern Serengeti	Lemala Ndutu Tented Camp	Full day Crater tour
4	Southern Serengeti	Lemala Ndutu Tented Camp	Full day game drive
5	Southern Serengeti	Lemala Ndutu Tented Camp	Full day game drive
6	Southern Serengeti	Lemala Ndutu Tented Camp	Balloon Safari(optional) Game drive
7	Southern Serengeti	Lemala Ndutu Tented Camp	Full day game drive
8	Ngorongoro Crater	Ngorongoro Serena Lodge	Leisure
9	Ngorongoro Crater	Ngorongoro Serena Lodge	Full day game drive
10	Manyara National Park	Escarpment luxury lodge	Full day game drive
11	Mto-Wa-Mbu village	No Accommodation	Zip line adventure/ Departure



### SAFARI PRICE

PER PERSON ADULT SHARING IN TWIN OR DOUBLE

- USD 10,300 based on one person
- USD 8,250 per person for minimum of 2 people sharing (in a twin or double)
- USD 7,650 per person for minimum of 4 people sharing (in a twin or double)



SEMI - LUXURY ACCOMMODATION

Day	Destination	Accommodation	Activities
1	Arrival- Arusha	Arusha African Tulip hotel	Airport Transfer/ Hotel
2	Flying/ Arusha/ Nduvu	Lake Maseki Tented lodge	Full day game drive
3	Southern Serengeti	Lake Maseki Tented lodge	Full day game drive
4	Southern Serengeti	Lake Maseki Tented lodge	Full day game drive
5	Southern Serengeti	Lake Maseki Tented lodge	Full day game drive
6	Southern Serengeti	Lake Maseki Tented lodge	Balloon Safari(optional)Game drive
7	Southern Serengeti	Lake Maseki Tented lodge	Full day game drive
8	Ngorongoro Crater	Ngorongoro Sopa Lodge	Leisure
9	Ngorongoro Crater	Ngorongoro Sopa Lodge	Full day Crater Tour
10	Manyara National Park	Lake Manyara Kilima Moja	Full day game drive
11	Mto-Wa-Mbu village	No Accommodation	Zip line adventure/ Departure



SAFARI PRICE	PER PERSON ADULT SHARING IN TWIN OR DOUBLE
- USD 9,800 based on one person	
- USD 7,750 per person for minimum of 2 people sharing (in a twin or double)	
- USD 7,140 per person for minimum of 4 people sharing (in a twin or double)	
- USD 6,850 per person for minimum of 6 people sharing (in a twin or double)	



MID RANGE - ACCOMMODATION

Day	Destination	Accommodation	Activities
1	Arrival- Arusha	Arusha Planet Lodge	Airport Transfer/ Hotel
2	Flying/ Arusha/ Nduvu	Nduvu Acacia Migration Camp	Full day game drive
3	Southern Serengeti	Nduvu Acacia Migration Camp	Full day game drive
4	Southern Serengeti	Nduvu Acacia Migration Camp	Full day game drive
5	Southern Serengeti	Nduvu Acacia Migration Camp	Full day game drive
6	Southern Serengeti	Nduvu Acacia Migration Camp	Balloon Safari(optional)Game drive
7	Southern Serengeti	Nduvu Acacia Migration Camp	Full day game drive
8	Ngorongoro Crater	Ngorongoro Tortilis Camp	Leisure
9	Ngorongoro Crater	Ngorongoro Tortilis Camp	Full day Crater Tour
10	Manyara National Park	Manyara Burudika Lodge	Full day game drive
11	Mto-Wa-Mbu village	No Accommodation	Zip line adventure/ Departure



SAFARI PRICE	PER PERSON ADULT SHARING IN TWIN OR DOUBLE
- USD 8,290 based on one person	
- USD 5,490 per person for minimum of 2 people sharing (in a twin or double)	
- USD 4,800 per person for minimum of 4 people sharing (in a twin or double)	
- USD 4,520 per person for minimum of 6 people sharing (in a twin or double)	



# BUSH TO BEACH TANZANIA SAFARI & ZANZIBAR BEACH HOLIDAY

**BEST MONTH TO TRAVEL:**  
JUNE, JULY, AUGUST, SEPTEMBER & OCTOBER EVERY YEAR



## Itinerary Overview

**11 DAYS.** Tanzania safari and Zanzibar beach holiday- It's an experience covering the best national parks in northern Tanzania which include Serengeti National Park with the largest wildlife concentration with possibility to see the annual wildebeest migration, the world's most scenic park Ngorongoro Crater, and Lake Manyara national park in the great rift valley famous for tree climbing lions . The first Europeans to discover Zanzibar were the Portuguese, who arrived in the late fifteenth century. In keeping with their conduct in the rest of their empire, they had little interest in the place beyond keeping it out of the hands of their language. Below is the sample itinerary for you to discover Zanzibar and enjoy your stay in this beautifully island.

## TRANSPORTATION:

Safari Land Cruiser with pop up roof & Wi-Fi on board.

## LUXURY ACCOMMODATION

Day	Destination	Accommodation	Activities
1	Arrival- Arusha	Arusha Gran Melia hotel	Airport Transfer/ Hotel
2	Manyara National Park	Escarpment Luxury Lodge	Full day game drive
3	Serengeti National Park	Four Seasons Serengeti	Full day game drive
4	Serengeti National Park	Four Seasons Serengeti	Full day game drive
5	Serengeti National Park	Four Seasons Serengeti	Balloon Safari(optional) Game drive
6	Ngorongoro Crater	Ngorongoro Elewana Camp	Afternoon/ Leisure
7	Ngorongoro Crater	Melia Zanzibar	Game drive / Flight to Zanzibar
8	Zanzibar/Stone town	Melia Zanzibar	Kiwengwa North cost Zanzibar
9	Zanzibar/ North coast	Zuri resort Nungwi	Beach holiday
10	Zanzibar/ North coast	Zuri resort Nungwi	Beach holiday
11	Departure	No Accommodation	Transfer/ Departure



## SAFARI PRICE

## PER PERSON ADULT SHARING IN TWIN OR DOUBLE

- USD 13,740 based on one person
- USD10,25 per person for minimum of 2 people sharing (in a twin or double)
- USD 9,520 per person for minimum of 4 people sharing (in a twin or double)
- USD9,330 per person for minimum of 6 people sharing (in a twin or double)



SEMI - LUXURY ACCOMMODATION

Day	Destination	Accommodation	Activities
1	Arrival- Arusha	Arusha Kahawa House	Airport Transfer/ Hotel
2	Manyara National Park	Manyara Kilima moja Lodge	Full day game drive
3	Serengeti National Park	Serengeti Acacia Camp	Full day game drive
4	Serengeti National Park	Serengeti Acacia Camp	Full day game drive
5	Serengeti National Park	Serengeti Acacia Camp	Balloon Safari(optional) Game drive
6	Ngorongoro Crater	Ngorongoro Serena Lodge	Afternoon/ Leisure
7	Ngorongoro Crater	Zanzibar Serena	Game drive / flight to Zanzibar
8	Zanzibar/Stone town	Nungwi double tree by Hilton	Stone town tour (optional)
9	Zanzibar/ North coast	Nugwi double tree by Hilton Resort	Beach holiday
10	Zanzibar/ North coast	Nugwi double tree by Hilton Resort	Beach holiday
11	Departure	No Accommodation	Transfer/ Departure



**SAFARI PRICE**

**PER PERSON ADULT SHARING IN TWIN OR DOUBLE**

- USD 8,140 based on one person
- USD ,6490 per person for minimum of 2 people sharing (in a twin or double)
- USD 5,820 per person for minimum of 4 people sharing (in a twin or double)
- USD 5,540 per person for minimum of 6 people sharing (in a twin or double)



MID RANGE - ACCOMMODATION

Day	Destination	Accommodation	Activities
1	Arrival- Arusha	Arusha Planet Lodge	Airport Transfer/ Hotel
2	Manyara National Park	Pamoja olea farm Lodge	Full day game drive
3	Serengeti National Park	Serengeti Embalakai Camp	Full day game drive
4	Serengeti National Park	Serengeti Embalakai Camp	Full day game drive
5	Serengeti National Park	Serengeti Embalakai Camp	Balloon Safari(optional)Game drive
6	Ngorongoro Crater	Ngorongoro Tortilis Camp	Afternoon/ Leisure
7	Ngorongoro Crater	Tembo Beach Hotel	Game drive / Flight to Zanzibar
8	Zanzibar/Stone town	Ocean Paradise beach resort	Stone town tour (optional)
9	Zanzibar/ North coast	Ocean Paradise beach resort	Beach holiday
10	Zanzibar/ North coast	Ocean Paradise beach resort	Beach holiday
11	Departure	No Accommodation	Transfer/ Departure



**SAFARI PRICE**

**PER PERSON ADULT SHARING IN TWIN OR DOUBLE**

- USD 7,080 based on one person
- USD 5,470 per person for minimum of 2 people sharing (in a twin or double)
- USD 4,580 per person for minimum of 4 people sharing (in a twin or double)
- USD 3,770 person for minimum of 6 people sharing (in a twin or double)



# MAGIC OF TANZANIA ODYSSEY FLY OUT SAFARI

**BEST MONTH TO TRAVEL:**  
JUNE, JULY, AUGUST & SEPTEMBER EVERY YEAR



## Itinerary Overview

**7 DAYS.** This safari is an awesome display of natural wonders with over two million wildebeest, zebra, and antelope traveling over 450 miles across the plane of the Serengeti to ensure their survival that there's danger presented by the stalking lions and cheetah among other predators of migrating wildlife.

### TRANSPORTATION:

Safari Land Cruiser with pop up roof & Wi-Fi on board.

## LUXURY ACCOMMODATION

Day	Destination	Accommodation	Activities
1	Arrival- Arusha	Arusha Coffee Lodge	Airport Transfer/ Hotel
2	Tarangire National Park	Tarangire Treetops	Full day game drive
3	Ngorongoro Crater	Manor at Ngorongoro	Full day game drive
4	Serengeti National Park	Serengeti Pioneer Camp	Full day game drive
5	Serengeti National Park	Serengeti Pioneer Camp	Full day game drive
6	Serengeti National Park	Serengeti Pioneer Camp	Balloon Safari(optional) Game drive
7	Fly out/ Serengeti	No accommodation/ Hot lunch	Departure



### SAFARI PRICE

PER PERSON ADULT SHARING  
IN TWIN OR DOUBLE

- USD 10,340 based on one person
- USD 7,690 per person for minimum of 2 people sharing (in a twin or double)
- USD 7,470 per person for minimum of 4 people sharing (in a twin or double)
- USD 7,390 per person for minimum of 6 people sharing (in a twin or double)





SEMI - LUXURY ACCOMMODATION

Day	Destination	Accommodation	Activities
1	Arrival- Arusha	Arusha Four Point by Sheraton	Airport Transfer/ Hotel
2	Tarangire National Park	Acacia Tarangire camp	Full day game drive
3	Ngorongoro Crater	The Retreat at Ngorongoro	Full day Crater tour
4	Serengeti National Park	Acacia Serengeti Camp	Full day game drive
5	Serengeti National Park	Acacia Serengeti Camp	Full day game drive
6	Serengeti National Park	Acacia Serengeti Camp	Balloon Safari(optional)Game drive
7	Fly out/ Serengeti	No accommodation/ Hot lunch	Departure



**SAFARI PRICE** PER PERSON ADULT SHARING IN TWIN OR DOUBLE

- USD 5,560 based on one person
- USD 5,320 per person for minimum of 2 people sharing (in a twin or double)
- USD 3,870 per person for minimum of 4 people sharing (in a twin or double)
- USD 3,680 per person for minimum of 6 people sharing (in a twin or double)



MID RANGE - ACCOMMODATION

Day	Destination	Accommodation	Activities
1	Arrival- Arusha	Arusha African Tulip	Airport Transfer/ Hotel
2	Tarangire National Park	Maramboi Tented Lodge	Full day game drive
3	Ngorongoro Crater	Ngorongoro Farm House Valley	Full day Crater tour
4	Serengeti National Park	Embalakai Serengeti Camp	Full day game drive
5	Serengeti National Park	Embalakai Serengeti Camp	Full day game drive
6	Serengeti National Park	Embalakai Serengeti Camp	Balloon Safari(optional) Game drive
7	Fly out/ Serengeti	No accommodation/ Hot lunch	Departure



**SAFARI PRICE** PER PERSON ADULT SHARING IN TWIN OR DOUBLE

- USD 5,140 per person based on one person
- USD 4,170 per person for minimum of 2 people sharing (in a twin or double)
- USD 3,720 per person for minimum of 4 people sharing (in a twin or double)
- USD 3,520 per person for minimum of 6 people sharing (in a twin or double)





# WONDER OF THE WORLD WILDEBEEST MIGRATION CROSSING THE MARA RIVER SAFARI

BEST MONTH TO TRAVEL:  
JULY, AUGUST, SEPTEMBER & OCTOBER EVERY YEAR

## Itinerary Overview

**10 DAYS.** Wonder of the world wildebeest migration safari holidays and travel package have been designed specially to focus on and to increase your chance to see the great Serengeti wildebeest migration. The northern Serengeti areas are the best locations for tracking the wildebeest migration crossing the Mara river. Predator in action is at its peak with great sightings of crocodile, cheetah, lion, hyena, leopard, and a very good chance to see adrenalin packed kills.

### TRANSPORTATION:

Safari Land Cruiser with pop up roof & Wi-Fi on board.

## LUXURY ACCOMMODATION

Day	Destination	Accommodation	Activities
1	Arrival- Arusha	Arusha Gran Melia hotel	Airport Transfer/ Hotel
2	Tarangire National Park	Lemala Mpingo Ridge camp	Full day game drive
3	Center Serengeti	Four Season Serengeti lodge	Full day game tour
4	Northern Serengeti	Mara Mara river Tented Camp	Full day game drive
5	Northern Serengeti	Mara Mara river Tented Camp	Full day game drive
6	Northern Serengeti	Mara Mara river Tented Camp	Balloon Safari(optional) Game drive
7	Center Serengeti	Four season Serengeti lodge	Full day game drive
8	Ngorongoro Crater	Manor at Ngorongoro	Leisure
9	Ngorongoro Crater	Manor at Ngorongoro	Full day Crater Tour
10	Mto-Wa-Mbu village	No Accommodation	Culture tour/ departure

### SAFARI PRICE

PER PERSON ADULT SHARING  
IN TWIN OR DOUBLE

- USD 16,060 based on one person
- USD 10,120 per person for minimum of 2 people sharing (in a twin or double)
- USD 9,670 per person for minimum of 4 people sharing (in a twin or double)
- USD 9,400 per person for minimum of 6 people sharing (in a twin or double)



### SEMI - LUXURY ACCOMMODATION

Day	Destination	Accommodation	Activities
1	Arrival- Arusha	Arusha Kahawa House	Airport Transfer/ Hotel
2	Tarangire National Park	Maramboi Tented Lodge	Full day game drive
3	Center Serengeti	Kubu Kubu Tented lodge	Full day game tour
4	Northern Serengeti	Acacia Migration Camp	Full day game drive
5	Northern Serengeti	Acacia Migration Camp	Full day game drive
6	Northern Serengeti	Acacia Migration Camp	Balloon Safari(optional)Game drive
7	Center Serengeti	Kubu kubu Tented Lodge	Full day game drive
8	Ngorongoro Crater	Kitela Lodge	Leisure
9	Ngorongoro Crater	Kitela Lodge	Full day Crater Tour
10	Mto-Wa-Mbu village	No Accommodation	Culture tour/ departure



#### SAFARI PRICE PER PERSON ADULT SHARING IN TWIN OR DOUBLE

- USD 8,300 based on one person
- USD 6,510 per person for minimum of 2 people sharing (in a twin or double)
- USD 5,910 per person for minimum of 4 people sharing (in a twin or double)
- USD 5,650 per person for minimum of 6 people sharing (in a twin or double)



### MID RANGE - ACCOMMODATION

Day	Destination	Accommodation	Activities
1	Arrival- Arusha	Arusha Planet Lodge	Airport Transfer/ Hotel
2	Tarangire National Park	Lake Burunge Tented Lodge	Full day game drive
3	Center Serengeti	Embalakai Tented Camp	Full day game drive
4	Northern Serengeti	Tanzania Bush Camp	Full day game drive
5	Northern Serengeti	Tanzania Bush Camp	Full day game drive
6	Northern Serengeti	Tanzania Bush Camp	Balloon Safari(optional)Game drive
7	Center Serengeti	Embalakai Tented Camp	Full day game drive
8	Ngorongoro Crater	Ngorongoro Tloma Lodge	Leisure
9	Ngorongoro Crater	Ngorongoro Tloma Lodge	Full day Crater Tour
10	Mto-Wa-Mbu village	No Accommodation	Culture tour/ departure

#### SAFARI PRICE PER PERSON ADULT SHARING IN TWIN OR DOUBLE

- USD 6,560 based on one person
- USD 5,160 per person for minimum of 2 people sharing (in a twin or double)
- USD 4,530 per person for minimum of 4 people sharing (in a twin or double)
- USD 4,260 per person for minimum of 6 people sharing (in a twin or double)



# UGANDA BIG PRIMATE AND WILDLIFE SAFARI EXPERIENCE

BEST MONTH TO TRAVEL:  
ALL YEAR AROUND



## Itinerary Overview

**10 DAY TRIP.** brings you to the big primate safari of Uganda, where the Savannah meets the tropical rain forest. Expect to see some of the unique and interesting animals of the savanna like lion, elephant, buffalo, giraffe, hippo, and leopard among other and up to 13 primate species, including gorillas and chimpanzees.

### TRANSPORTATION:

Safari Land Cruiser with pop up roof & Wi-Fi on board.

## LUXURY ACCOMMODATION

Day	Destination	Accommodation	Activities
1	Arrival -Entebbe	Serena Lake Victoria	Airport Transfer/ Hotel
2	Murchison Falls National Park	Nile Safari Lodge	Rhino trekking
3	Murchison Falls National Park	Nile Safari Lodge	Full day game drive
4	Kibale National Park	Kyancinga lodge	Chimpanzee tracking
5	Queen Elizabeth National Park	Kyambura game lodge	Full day game drive
6	Queen Elizabeth National Park	Kyambura game lodge	Full day game drive
7	Bwindi Impenetrable National Park	Gorilla Height Lodge	Gorilla tracking
8	Bwindi Impenetrable National Park	Gorilla Height Lodge	Gorilla tracking
9	Lake Bunyonyi	Arcadia cottages	Leisure
10	Entebbe	No Accommodation	Departure



## SAFARI PRICE

PER PERSON ADULT SHARING  
IN TWIN OR DOUBLE

- USD 13,590 based on one person
- USD 8,970 per person for minimum of 2 people sharing (in a twin or double)
- USD 8,080 per person for minimum of 4 people sharing (in a twin or double)
- USD 7,790 per person for minimum of 6 people sharing (in a twin or double)



SEMI - LUXURY ACCOMMODATION

Day	Destination	Accommodation	Activities
1	Arrival -Entebbe	Commonwealth Resort	Airport Transfer/ Hotel
2	Murchison Falls National Park	Paraa Safari Lodge	Rhino trekking
3	Murchison Falls National Park	Paraa Safari Lodge	Full day game drive
4	Kibale National Park	Papaya Lake Lodge	Chimpanzee tracking
5	Queen Elizabeth National Park	Mweya Safari lodge	Full day game drive
6	Queen Elizabeth National Park	Mweya Safari lodge	Full day game drive
7	Bwindi Impenetrable National Park	Mahogany Spring	Gorilla tracking
8	Bwindi Impenetrable National Park	Mahogany Spring	Gorilla tracking
9	Lake Bunyonyi	Bird Nest Resort	Leisure
10	Entebbe	No Accommodation	Departure



SAFARI PRICE PER PERSON ADULT SHARING IN TWIN OR DOUBLE

- USD 11,340 based on one person
- USD 7,600 per person for minimum of 2 people sharing (in a twin or double)
- USD 6,900 per person for minimum of 4 people sharing (in a twin or double)
- USD 6,670 per person for minimum of 6 people sharing (in a twin or double)

MID RANGE - ACCOMMODATION

Day	Destination	Accommodation	Activities
1	Arrival -Entebbe	Cassia lodge	Airport Transfer/ Hotel
2	Murchison Falls National Park	Pakuba Lodge	Rhino trekking
3	Murchison Falls National Park	Pakuba Lodge	Full day game drive
4	Kibale National Park	Kibale forest camp	Chimpanzee tracking
5	Queen Elizabeth National Park	Enganzi Game Lodge	Full day game drive
6	Queen Elizabeth National Park	Enganzi Game Lodge	Full day game drive
7	Bwindi Impenetrable National Park	Nkuringo Gorilla camp	Gorilla tracking
8	Bwindi Impenetrable National Park	Nkuringo Gorilla camp	Gorilla tracking
9	Lake Bunyonyi	Bunyonyi Eco Resort	Leisure
10	Entebbe	No Accommodation	Departure



SAFARI PRICE PER PERSON ADULT SHARING IN TWIN OR DOUBLE

- USD 7,560 based on one person
- USD 5,030 per person for minimum of 2 people sharing (in a twin or double)
- USD 4,350 per person for minimum of 4 people sharing (in a twin or double)
- USD 4,130 per person for minimum of 6 people sharing (in a twin or double)



# KILIMANJARO CHALLENGE CLIMB MACHAME ROUTE

**BEST MONTH TO TRAVEL:**  
JUNE, JULY, AUGUST, SEPTEMBER & OCTOBER EVERY YEAR



## Itinerary Overview

**7 DAYS. Machame route Mount Kilimanjaro Climbing tour** can be done in 6 days although the best recommend duration is 7 days on Mountain. The 7 Days Kilimanjaro Climb Machame Route is best since it provides climber with enough time for acclimatization with altitude sickness. So, during 7 days Machame Route on Mount Kilimanjaro climb is used by trekker to about 53% of them, and most seasoned trekkers choose the Machame route. It is popular for many travellers either charity climb in join groups, single or private climbers. It is planned for physically fitting people with some trekking practice, but plenty of first-time climbers use the route as well and do fair reasonable. It is regarded as one of Kilimanjaro's better trail and thus is suggested to many climbers. Mount Kilimanjaro Machame climbing Route Itinerary which entails to spend 6 nights being on mountain while hiking. When you speaking of Mount Kilimanjaro climbing Tour, the Machame Climbing Route Itinerary is the most preferred for almost 90% of climbers on this highest and free-standing Mountain in the world. Many Climbers have a preference to climb Kilimanjaro on budget cost however there is some cases, climbing prices become almost similar to many companies. In Machame Climbing Route Itinerary you will have an overnight stay in Campsite arranged by your guide and porters all the way to the summit of Mount Kilimanjaro. Climbing Kilimanjaro Machame Route is best as it provides the opportunity to acclimatize with altitude, good terrain and hence comfort your trek in addition to attractive scenic view covered by mountain.

**TRANSPORTATION:**  
4x4 WD Min- Van & Wi-Fi on boardboard.



## MACHAME ROUTE

Day	Destination	Accommodation	Activities
1	Arrival- Kilimanjaro Airport	Arusha African Tulip Hotel	Airport Transfer/ Hotel
2	Machame Hut	Machame Hut Camp	Kilimanjaro trekking
3	Shira Camp	Shira Hut Camp	Kilimanjaro trekking
4	Barranco Valley Camp	Barranco Hut Camp	Kilimanjaro trekking
5	Barafu Base Camp	Barafu Hut Camp	Kilimanjaro trekking
6	Uhuru peak Summit	Mweka Camp	Kilimanjaro trekking
7	Departure	No accommodation	Transfer/ Departure

**SAFARI PRICE**

**PER PERSON ADULT SHARING IN TWIN OR DOUBLE**

- **USD 3,300** based on one person
- **USD 2,700** per person for minimum of 2 people sharing (in a twin or double)
- **USD 2,500** per person for minimum of 4 people sharing (in a twin or double)
- **USD 2,200** per person for minimum of 6 people sharing (in a twin or double)





**THANKS**

For choosing us





## CROSS TO AFRICA SAFARIS LIMITED

### TANZANIA

P.O.Box 1385,  
Arusha, Tanzania  
Whatsapp: +255687318020



### UNITED STATES

2222 Westerland Dr, Apt# 82,  
Houston, Texas, 77063  
Whatsapp: (832)577-6076

Email: [info@crosstoafिकासafaris.com](mailto:info@crosstoafिकासafaris.com)

SCAN



[www.crosstoafिकासafaris.com](http://www.crosstoafिकासafaris.com)